

MTec Customer Care

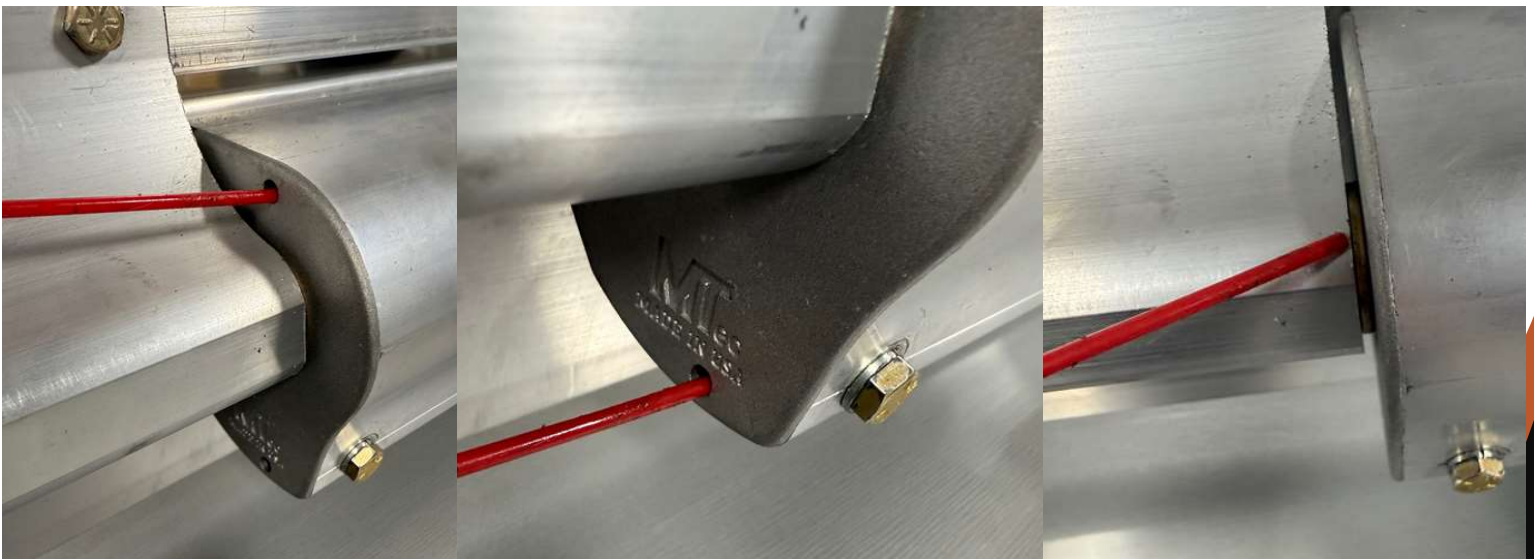
MTec uses high quality components to ensure best product possible. The hinge is designed to have superior resistance to corrosion and requires very little maintenance.

For areas that are exposed to road salt, we suggest to keep the hinges washed down after long period of exposure. When storing the trailer, please ensure the hinge is washed off and lubricated.

We suggest lubricating periodically to ensure the best performance possible. In very rare cases there may be a noise sound coming from your hinges. In this case lubricate, then open and close the door a few times, until the noise disappears.

For lubrication, 3-IN-ONE Garage Door Lubricant or similar lubricant is suggested.

For the three lubrication points, please refer below. Excess lubricate will drain out of bottom hole.



MTec Adjustment

Note: Some hinges may come fully adjusted from the factory.

WARNING DO NOT REMOVE BOLTS!

Please see figure below. Do not loosen bolt past this point. When the bolt is loose, the lock washer should spin freely.



1. Use 7/16 socket or wrench. **NO POWER TOOLS.**
2. Each bolt can be tightened a total of **12-13** clock wise rotations from the loosened state. Be sure to tighten both bolts evenly. The bolts should tighten or loosen with ease. When the hinge is fully adjusted you should feel resistance and the bolt bottom out, stop at this point do not try to tighten any more.
3. **BOLTS SHOULD TURN EASY BY HAND. DO NOT OVER TORQUE. OVER TORQUING MAY RESULT IN A BROKEN COMPONENT AND VOID THE WARRANTY.**

